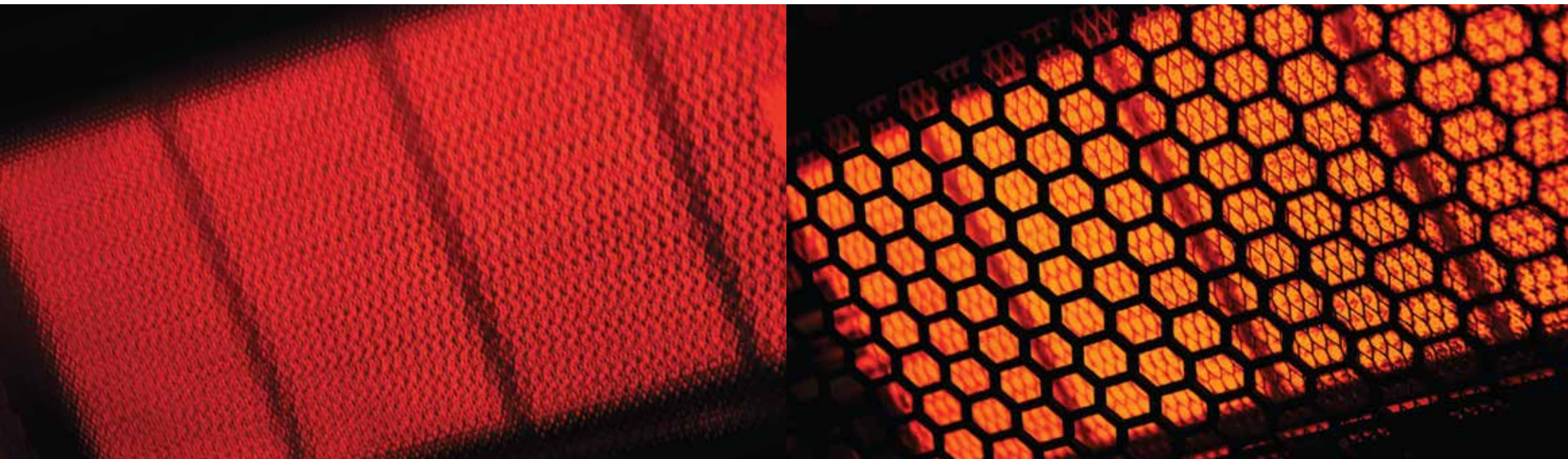




GOLDSUN
elite



GOLDSUN
performa



Double-stage Heating System:

Goldsun Elite & Performa heaters provides the required level of comfort with its double-stage heating system. It gives the opportunity to heat without discomfort by making it possible to choose from low or high level of heating depending on the weather.

Easy-to-use Mounting Panel:

The devices can easily be mounted on a wide variety of surfaces, thanks to the mounting panels and apparatus that are provided with Goldsun Elite & Performa heaters.

Wind Resistance (Elite Series):

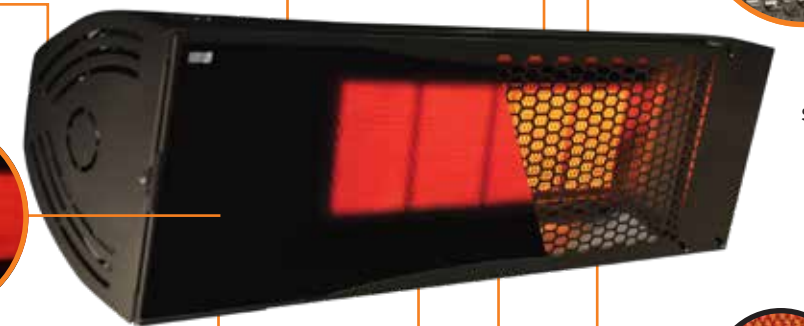
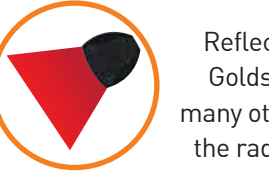
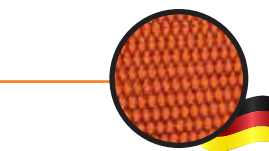
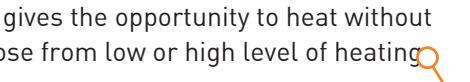
With the glasses made of transparent ceramics which are placed in front of the ceramic plates, the counter flow of wind can be prevented 100% and provide Elite series heaters with a unique wind resistance. The transparency of the glass increases with the heat and results with better thermal radiation to cover wider spaces.

Remote Control:

A remote control module is included within the heaters. One piece of remote controller gives the opportunity to have control over 16 devices within 50 meters.

Aesthetic and Practical Design:

Goldsun Elite & Performa heaters have an aesthetic and practical design that hides all sort of connection apparatus such as cables, etc. to make sure that these heaters can be used without an architectural eyesore in spaces especially like cafes, restaurants and winter gardens.



Thermal Shield:

When used under applications like tents or pergolas, thanks to the exclusive thermal shield that can be mounted on the device, Goldsun Elite & Performa heaters do not cause any damage to the materials they are placed under.

Wind Resistance [Performa Series]:

Goldsun performa wind shields makes the heaters resistant against the wind and avoid shut-off.

Thanks to the decorative high temperature resistant stainless steel wind shield in front of the ceramic plates, counter flow of wind can be significantly decelerated. Flame rods which are placed on both sides of the devices make sure that the combustion still continues in windy environments.

Ceramic Plates Made in Germany:

Goldsun Elite & Performa heaters use ceramic burner plates that were made in Germany and secured by a patent. The device scores a 20% more efficiency thanks to the stainless steel grids attached in front of the plates which have the highest combustion and thermal radiation efficiency on the market.

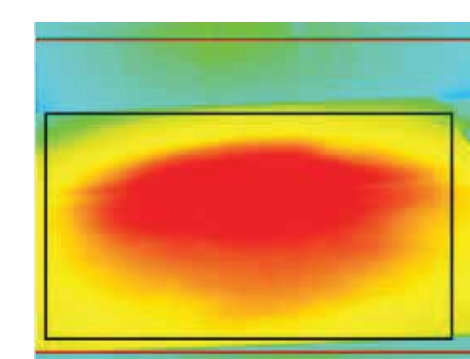
Reflector:

Reflector is another factor that improves the efficiency of Goldsun Elite & Performa heaters and it is a feature that many other products on the market do not have. This helps the radiant energy to be focused and directed towards the customers rather than into the air.

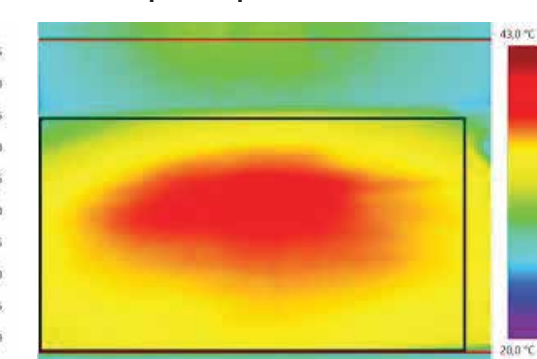
High Energy Conservation:

With the combination of all these features, Goldsun Elite & Performa heaters provide high energy with less consumption. Thermal camera images on the right show the heating performance of GOLDSUN PERFORMA (11kW) versus a similar competitor product (18kW) after 60 minutes, both mounted at 3 meters and measured under the same conditions. Red areas show the highest temperatures that were reached.

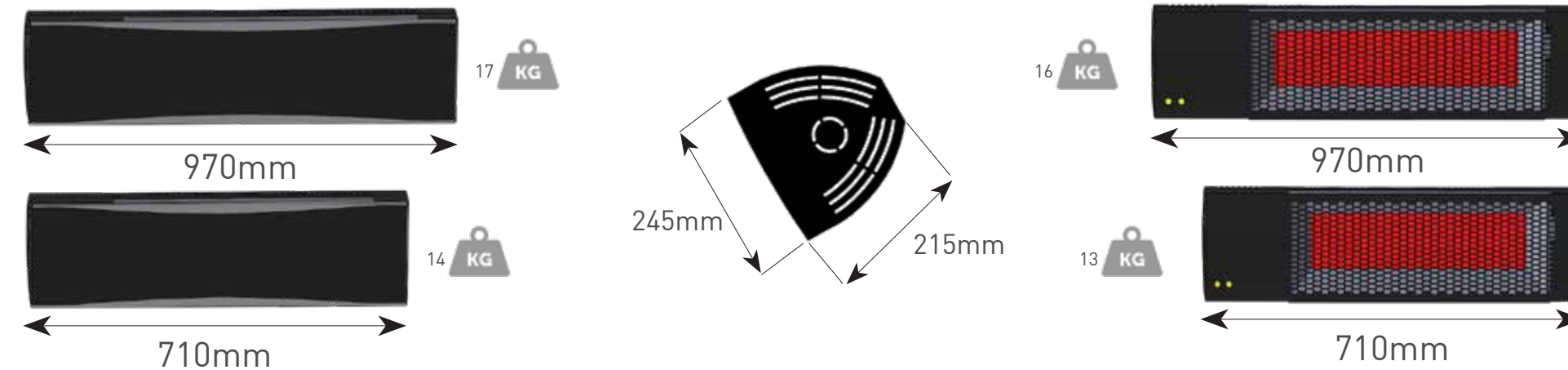
Goldsun Performa 7/11 - 11 kW



Competitor product - 18kW



Technical Specifications:



Product ID	Capacity (kW)		Heat Coverage* (m ²)	Natural Gas Consumption (m ³ /h)		Recommended Mountin Height (m)	Natural Gas Inlet Pressure (mbar)
	Low	High		Low	High		
ELT.5/7	5	7	10-30	0,52	0,72	2,0	18-55
ELT.7/11	7	11	24-50	0,72	1,14	2,2	18-55
PRF.5/7	5	7	10-30	0,52	0,72	2,0	18-55
PRF.7/11	7	11	24-50	0,72	1,14	2,2	18-55

* These are estimated values and may vary by factors such as indoor/outdoor usage, isolation, wind, etc.

CUKUROVAISI
www.cukurovaisi.com

Gebze Plastikçiler Organize Sanayi Bölgesi
Atatürk Bulvarı No:28 41400 Gebze / Kocaeli
Tel +[90] 262 751 33 66 - Fax +[90] 262 751 33 88
info@cukurovaisi.com

